

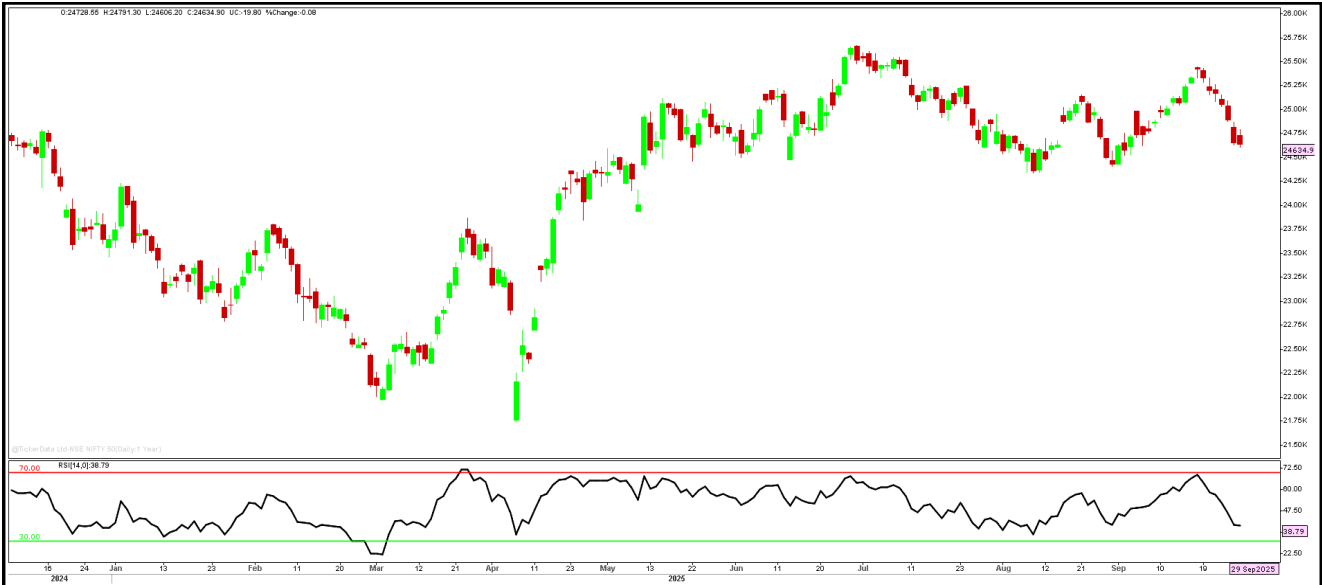
PROGRESSIVE'S EVENING STROLL

DATE: 29 September, 2025

Market Snapshot:

Extreme volatility was observed in today's trade, as the Index soared higher after a strong opening but struggled to sustain its gains at the higher levels, ultimately erasing all its gains to trade lower. A sharp recovery was seen from the lower levels in the mid-session, but it did not last long and eventually ended the session lower at 24,634.90 with a loss of 19.80 points. Among the sectors, PSU Banks and Realty were the top performers, whereas the Defence segment corrected the most, followed by Media. From the broader markets, Midcaps outperformed while Smallcaps performed in tandem with the Frontline Index.

HOW THE DAY TRENDED



INDICES			
Index	Close	Points	%Chg.
Sensex	80364.94	(61.52)	(0.08)
Nifty50	24634.90	(19.80)	(0.08)
Nifty Midcap 100	56533.15	154.60	0.27
Nifty Small Cap 100	17548.65	(12.25)	(0.07)

SECTORAL GAINERS / LOSERS			
Sectors	Close	Points	%Chg.
NIFTY PSU BANK	7390.75	129.30	1.78
NIFTY REALTY	874.75	7.60	0.88
NIFTY MEDIA	1562.10	(13.35)	(0.85)
NIFTY DEFENCE	7836.35	(113.45)	(1.43)

NIFTY TOP GAINERS / LOSERS					
Gainers	CMP (Rs)	%Chg.	Losers	CMP (Rs)	%Chg.
TITAN	3401.20	2.22	AXIS BANK	1132.20	(1.89)
WIPRO	239.64	1.65	MARUTI	15984.00	(1.85)
SBIN	870.75	1.61	DR REDDY	1234.60	(1.48)
INDUSIND BANK	723.40	1.49	ADANI ENT	2509.50	(1.34)

INDICES LEVELS FOR September 30, 2025

Nifty (future)	
Resistance	24850
Support	24550

Bank Nifty (future)	
Resistance	54880
Support	54240



PROGRESSIVE'S EVENING STROLL

DATE: 29 September, 2025

KEY TAKEAWAYS OF THE DAY

◆ **Ceigall-JSPPL JV wins Rs5092mn GMADA LOA for Mohali roads, 24-month contract:**

The company has announced that its JV with JSP Projects (CIL holding 80% and JSPPL 20%) has received LoA from the GMADA for a prestigious infrastructure development project. The contract, valued at Rs5092mn, covers the construction of internal roads and associated civil, public health, and electrical works in Pocket B, C & D of Aerotropolis, S.A.S Nagar in Mohali, Punjab. The project is to be executed within 24 months under an item-rate contract.

◆ **Azad Engineering receives order worth Rs6,510mn from Mitsubishi Heavy Industries:**

The company has signed a new LTCPA with Mitsubishi Heavy Industries Ltd, Japan valued at USD73.47mn (Rs6510mn) for the supply of highly engineered & complex rotating and stationary airfoils for advanced gas & thermal power turbine engines.

◆ **PG Electroplast acquires 50-acre land in Sri City, to invest Rs10bn:**

The company has acquired a 50-acre land parcel in Sri City, Andhra Pradesh. The company plans to invest around Rs10bn over the next five years to develop an integrated manufacturing campus at the site. Strategically located near the Chennai port, the facility is positioned to cater to future export opportunities while expanding the company's pan-India footprint. In the first phase, the company will set up a refrigerator plant with an annual production capacity of 1.2mn units, with commercial production targeted by Dec'26. The site is also being designed to accommodate future expansion into air conditioners, washing machines, and other home appliances and electronics.

◆ **Godrej Agrovet inks Rs9600mn deal with Food Processing Ministry:**

The company has signed a non-binding MoU with the MoFPI, Government of India. The agreement was signed on the sidelines of World Food India 2025 and marks a proposed investment of Rs9600mn. The company said the investment will be directed towards establishing manufacturing and upstream innovation facilities, including a research and development centre.

◆ **BEML, Bharat Forge, Data Patterns signed MoU to support AMCA and join ADA Eol:**

The company has entered into a Tripartite MoU at Pune along with Bharat Forge and Data Patterns, to jointly support the AMCA programme and to participate in the Eol floated by Aeronautical Development Agency (ADA).

◆ **Powergrid approves Rs7055.1mn investment in grid communication and emergency infrastructure:**

The company has approved two major infrastructure projects worth Rs7055.1mn to strengthen national grid operations and enhance disaster preparedness. The first project, valued at Rs2096.8mn, will establish a VOIP (Voice over Internet Protocol) communication system across all five regional grids Northern, North Eastern, Southern, Western, and Eastern. This project, slated for commissioning by August 23, 2026, is expected to improve coordination and efficiency in managing India's power transmission network. The second project, with a budget of Rs4958.3mn, will procure 20 sets (300 towers) of Emergency Restoration System under the Make in India initiative. Scheduled for commissioning by April 19, 2027, this system is designed to swiftly restore transmission lines during natural disasters or infrastructure failures, thereby strengthening India's resilience in critical power supply.

◆ **Indian Army issues Rs300bn tender to BEL for 'Anant Shastra' air defence missile systems:**

The Indian Army has issued a tender to the company for the procurement of five to six regiments of the indigenously developed 'Anant Shastra' surface-to-air missile weapon systems. The system, earlier known as the QRSAM, has been developed by the DRDO. The project is estimated to cost about Rs300bn and is aimed at strengthening air defence capabilities along the borders with Pakistan and China.

Source: Media Reports



DISCLAIMERS AND DISCLOSURES-

Progressive Share Brokers Pvt. Ltd. and its affiliates are a full-service, brokerage and financing group. Progressive Share Brokers Pvt. Ltd. (PSBPL) along with its affiliates are participants in virtually all securities trading markets in India. PSBPL started its operation on the National Stock Exchange (NSE) in 1996. PSBPL is a corporate trading member of Bombay Stock Exchange Limited (BSE), National Stock Exchange of India Limited (NSE) for its stock broking services and is Depository Participant with Central Depository Services Limited (CDSL) and is a member of Association of Mutual Funds of India (AMFI) for distribution of financial products.

PSBPL is SEBI registered Research Analyst under SEBI (Research Analysts) Regulations, 2014 with SEBI Registration No. INH000000859/Research Analyst BSE Enlistment No. 5049. PSBPL hereby declares that it has not defaulted with any stock exchange nor its activities were suspended by any stock exchange with whom it is registered in last five years. PSBPL has not been debarred from doing business by any Stock Exchange / SEBI or any other authorities; nor has its certificate of registration been cancelled by SEBI at any point of time.

PSBPL offers research services to clients as well as prospects. The analyst for this report certifies that all of the views expressed in this report accurately reflect his or her personal views about the subject company or companies and its or their securities, and no part of his or her compensation was, is or will be, directly or indirectly related to specific recommendations or views expressed in this report.

Other disclosures by Progressive Share Brokers Pvt. Ltd. (Research Entity) and its Research Analyst under SEBI (Research Analyst) Regulations, 2014 with reference to the subject company (s) covered in this report:-

- PSBPL or its associates financial interest in the subject company: NO
- Research Analyst (s) or his/her relative's financial interest in the subject company: NO
- PSBPL or its associates and Research Analyst or his/her relative's does not have any material conflict of interest in the subject company. The research Analyst or research entity (PSBPL) has not been engaged in market making activity for the subject company.
- PSBPL or its associates actual/beneficial ownership of 1% or more securities of the subject company at the end of the month immediately preceding the date of publication of Research Report: NO
- Research Analyst or his/her relatives have actual/beneficial ownership of 1% or more securities of the subject company at the end of the month immediately preceding the date of publication of Research Report: NO
- PSBPL or its associates may have received any compensation including for brokerage services from the subject company in the past 12 months. PSBPL or its associates may have received compensation for products or services other than brokerage services from the subject company in the past 12 months. PSBPL or its associates have not received any compensation or other benefits from the Subject Company or third party in connection with the research report. Subject Company may have been client of PSBPL or its associates during twelve months preceding the date of distribution of the research report and PSBPL may have co-managed public offering of securities for the subject company in the past twelve months.
- The research analyst has served as officer, director or employee of the subject company: NO
- Registration granted by SEBI and certification from NISM is in no way guarantee performance of the intermediary or provide any assurance of returns to investors

PSBPL and/or its affiliates may seek investment banking or other business from the company or companies that are the subject of this material. Our sales people, traders, and other professionals may provide oral or written market commentary or trading strategies to our clients that reflect opinions that are contrary to the opinions expressed herein, and our proprietary trading and investing businesses (if any) may make investment decisions that may be inconsistent with the recommendations expressed herein. In reviewing these materials, you should be aware that any or all of the foregoing, among other things, may give rise to real or potential conflicts of interest including but not limited to those stated herein. Additionally, other important information regarding our relationships with the company or companies that are the subject of this material is provided herein. This report is not directed to, or intended for distribution to or use by, any person or entity who is a citizen or resident of or located in any locality, state, country or other jurisdiction where such distribution publication, availability or use would be contrary to law or regulation or which would subject PSBPL or its group companies to any registration or licensing requirement within such jurisdiction. If this document is sent or has reached any individual in such country, especially, USA, the same may be ignored. Unless otherwise stated, this message should not be construed as official confirmation of any transaction. None of the material, nor its content, nor any copy of it, may be altered in any way, transmitted to, copied or distributed to any other party, without the prior express written permission of PSBPL. All trademarks, service marks and logos used in this report are trademarks or registered trademarks of PSBPL or its Group Companies. The information contained herein is not intended for publication or distribution or circulation in any manner whatsoever and any unauthorized reading, dissemination, distribution or copying of this communication is prohibited unless otherwise expressly authorized. Please ensure that you have read "Risk Disclosure Document for Capital Market and Derivatives Segments" as prescribed by Securities and Exchange Board of India before investing in Indian Securities Market. In so far as this report includes current or historic information, it is believed to be reliable, although its accuracy and completeness cannot be guaranteed.

Terms & Conditions:

This report has been prepared by PSBPL and is meant for sole use by the recipient and not for circulation. The report and information contained herein is strictly confidential and may not be altered in any way, transmitted to, copied or distributed, in part or in whole, to any other person or to the media or reproduced in any form, without prior written consent of PSBPL. The report is based on the facts, figures and information that are considered true, correct, reliable and accurate. The information is obtained from publicly available media or other sources believed to be reliable. Such information has not been independently verified and no guaranty, representation of warranty, express or implied, is made as to its accuracy, completeness or correctness. All such information and opinions are subject to change without notice. The report is prepared solely for informational purpose and its at discretion of the clients to buy or sell or subscribe for securities or other financial instruments for the clients. Though disseminated to all the customers simultaneously, not all customers may receive this report at the same time. PSBPL will not treat recipients as customers by virtue of their receiving this report.

Registered Office Address:

Progressive Share Brokers Pvt. Ltd,
122-124, Laxmi Plaza, Laxmi Indl Estate,
New Link Rd, Andheri West,
Mumbai—400053, Maharashtra
www.progressiveshares.com | Contact No.:022-40777500.

Compliance Officer:

Ms. Neha Oza,
Email: compliance@progressiveshares.com,
Contact No.:022-40777500.

Grievance Officer:

Email: grievancecell@progressiveshares.com

